



## RED BAG JOURNEY



1: Betty has become unwell and so Jenny (the Care Home Lead) does an assessment of Betty's condition, liaises with the appropriate service and a decision is made that Betty needs to go to hospital.

2: While waiting for the ambulance, Jenny packs a Red Bag to go with Betty to the hospital.

3. The Red Bag is given to the ambulance crew as part of the handover.

4: At hospital, Maria (the nurse) receives the Red Bag from the ambulance crew. The Red Bag identifies Betty as a Care Home resident, and the completed paperwork inside helps her understand Betty's medical background.



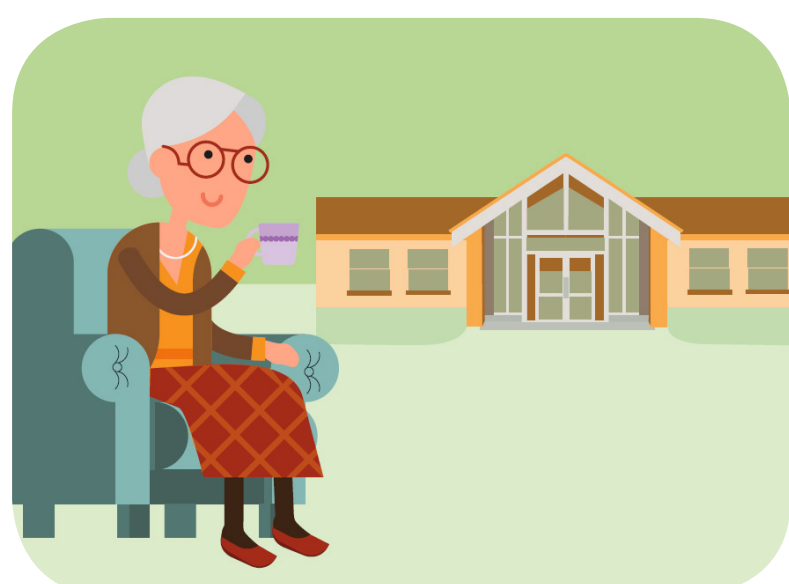
5: When Jenny comes to visit, Betty is feeling much better and they discuss her discharge from hospital with Maria and Bina (the doctor).



6: Betty's Red Bag is packed and ready for her return to the Care Home.



7: When Betty arrives home, Jenny updates their records with the papers and medication received back in the Red Bag.



8: Betty is now back in her favourite chair and enjoying a cup of tea.